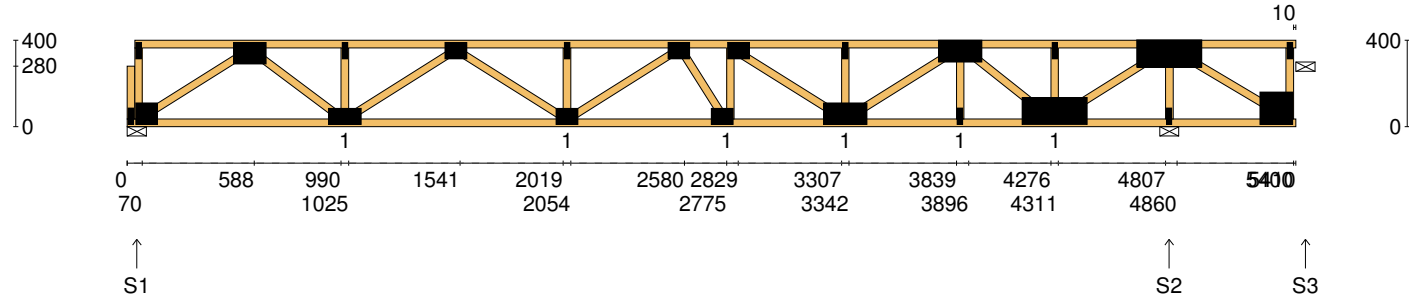


Client: DEDICATED DEVELOPMENT PTY LTD	Trusstech SA Pty Ltd 16 High St., Dry Creek, SA 5094	Job No: TT02398
Site: 638 BURBRIDGE RD WEST BEACH SA 5024 AUS	Joist Name: FJ2 Type: SJ 400 Joists: FJ7	Weight: 35.38 kg
Ref: DWELLING 2		Total Weight: 35.38 kg
		Laminations: 1



TIMBER / PLATES


Member	Size	Plating	Restraint
BC1	90x35-MGP10 H0 ADS	JD5	600
LBlock1	90x35-MGP10 H0 ADS	JD5	
LEW1	90x35-MGP10 H0 ADS	JD5	
TC1	90x35-MGP10 H0 ADS	JD5	300
W1	90x35-MGP10 H0 ADS	JD5	
W2	90x35-MGP10 H0 ADS	JD5	
W3	90x35-MGP10 H0 ADS	JD5	
W4	90x35-MGP10 H0 ADS	JD5	
W5	90x35-MGP10 H0 ADS	JD5	
W6	90x35-MGP10 H0 ADS	JD5	
W7	90x35-MGP10 H0 ADS	JD5	
W8	90x35-MGP10 H0 ADS	JD5	
W9	90x35-MGP10 H0 ADS	JD5	

- 10 more members were not shown -

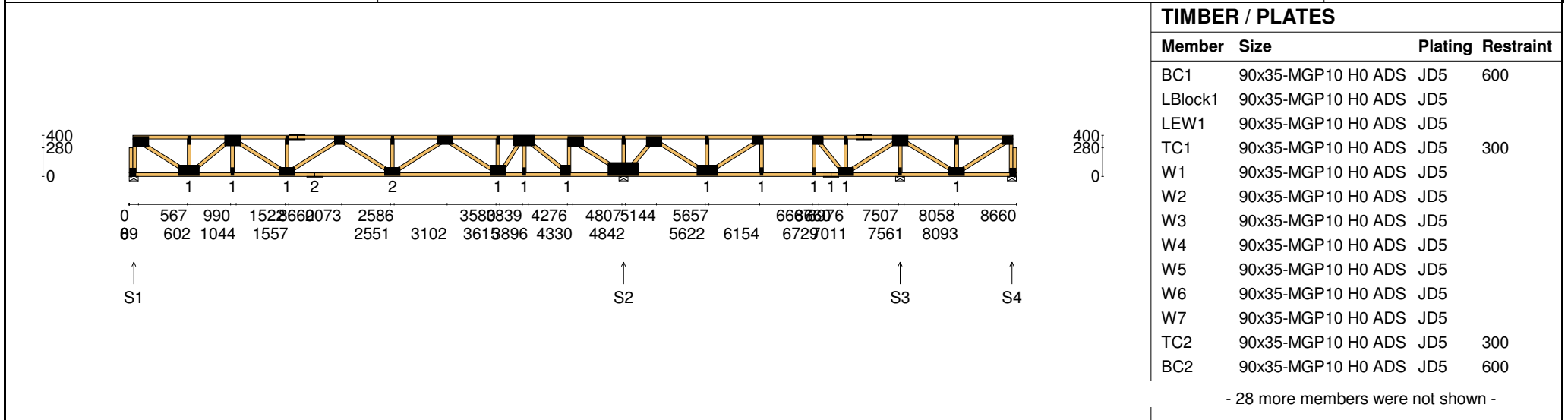
Vertical Reactions at Supports

	S1	S2	S3
1.35DL (kN)	0.67	2.07	-0.96
1.2DL + 1.5LL (kN)	3.32	10.23	-4.77

Joint	Nail Plate	Joint	Nail Plate
B1-1	25x75-MN	T7	25x75-MN
B1	100x100-MN	T8	100x200-MN
TL1	25x75-MN	B6	25x75-MN
T1	100x150-MN	B7	125x300-MN
B2	75x150-MN	T9	25x75-MN
T2	25x75-MN	T10	125x300-MN
T3	75x100-MN	B8	25x75-MN
B3	75x100-MN	TR1	25x75-MN
T4	25x75-MN	B9	150x150-MN
T5	75x100-MN		
B4	75x100-MN		
T6	75x100-MN		
B5	100x200-MN		

Span: 5410	Floor Material: Particle (15.4 kg/m²)	Application: General Areas	All dimensions in millimetres. This drawing should be read in conjunction with Multinail Technical sheets. Wall plates must be placed at supports only.	016020 (TN-016-020)
Overhang: 0/0	Floor Covering: Std Carpet + Underlay (8 kg/m²)	Live Load: 1.5 kPa		Ver: Floor 1.9.4
Spacing: 600	Ceiling Material: Plaster 10mm Supa Span (8.2 kg/m²)	Point Load: 1.8 kN		Date: 12/02/2019
Quantity: 1	Ceiling Fixing: Metal direct @ 600c	Design: AS 1720.1-2010		Page: 2 of 26

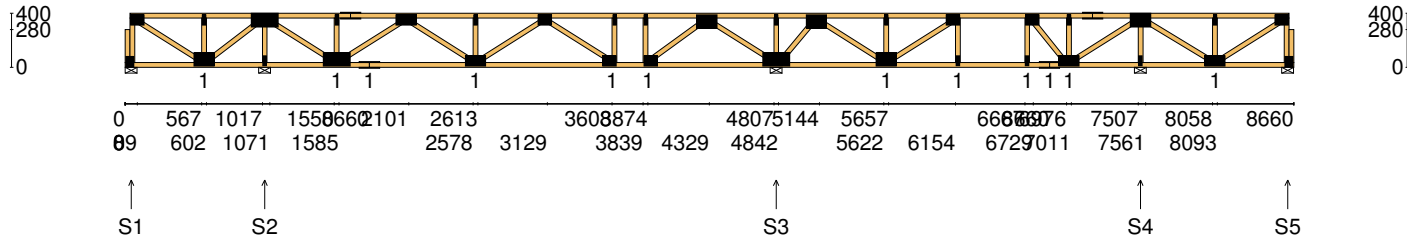
Client: DEDICATED DEVELOPMENT PTY LTD	Trusstech SA Pty Ltd 16 High St., Dry Creek, SA 5094	Job No: TT02398
Site: 638 BURBRIDGE RD WEST BEACH SA 5024 AUS		Weight: 56.66 kg
Ref: DWELLING 2	Joist Name: FJ3 Type: SJ 400 Joists: FJ8	Total Weight: 56.66 kg
		Laminations: 1



Vertical Reactions at Supports					Joint Nail Plate Joint Nail Plate
	S1	S2	S3	S4	BL1-1 25x75-MN T7 25x75-MN
1.35DL (kN)	0.76	2.05	1.24	0.10	T1 100x150-MN T8 75x150-MN
1.2DL + 1.5LL (kN)	3.40	8.07	4.06	0.23	BL1 25x75-MN B6 100x150-MN
					B1 100x200-MN T9 25x75-MN
					T2 25x75-MN T10 100x200-MN
					T3 100x150-MN B7 25x75-MN
					B2 25x75-MN B8 100x100-MN
					B3 75x150-MN T11 100x150-MN
					T4 25x75-MN B9 125x300-MN
					T5 75x150-MN T12 25x75-MN
					B4 75x150-MN T13 100x150-MN
					T6 75x100-MN B10 100x200-MN
					B5 75x150-MN BR1-1 25x75-MN
					- 15 more nail plates were not shown -

Span: 8660	Floor Material: Particle (15.4 kg/m²)	Application: General Areas	All dimensions in millimetres. This drawing should be read in conjunction with Multinail Technical sheets. Wall plates must be placed at supports only.	016020 (TN-016-020)
Overhang: 0/0	Floor Covering: Std Carpet + Underlay (8 kg/m²)	Live Load: 1.5 kPa		Ver: Floor 1.9.4
Spacing: 600	Ceiling Material: Plaster 10mm Supa Span (8.2 kg/m²)	Point Load: 1.8 kN		Date: 12/02/2019
Quantity: 1	Ceiling Fixing: Metal direct @ 600c	Design: AS 1720.1-2010		Page: 3 of 26

Client: DEDICATED DEVELOPMENT PTY LTD	Trusstech SA Pty Ltd 16 High St., Dry Creek, SA 5094	Job No: TT02398
Site: 638 BURBRIDGE RD WEST BEACH SA 5024 AUS		Weight: 54.76 kg
Ref: DWELLING 2	Joist Name: FJ4 Type: SJ 400 Joists: FJ9	Total Weight: 54.76 kg
		Laminations: 1



TIMBER / PLATES

Member	Size	Plating	Restraint
BC1	90x35-MGP10 H0 ADS	JD5	600
LBlock1	90x35-MGP10 H0 ADS	JD5	
LEW1	90x35-MGP10 H0 ADS	JD5	
TC1	90x35-MGP10 H0 ADS	JD5	300
W1	90x35-MGP10 H0 ADS	JD5	
W2	90x35-MGP10 H0 ADS	JD5	
W3	90x35-MGP10 H0 ADS	JD5	
W4	90x35-MGP10 H0 ADS	JD5	
W5	90x35-MGP10 H0 ADS	JD5	
W6	90x35-MGP10 H0 ADS	JD5	
W7	90x35-MGP10 H0 ADS	JD5	
TC2	90x35-MGP10 H0 ADS	JD5	300
BC2	90x35-MGP10 H0 ADS	JD5	600


- 26 more members were not shown -

Vertical Reactions at Supports

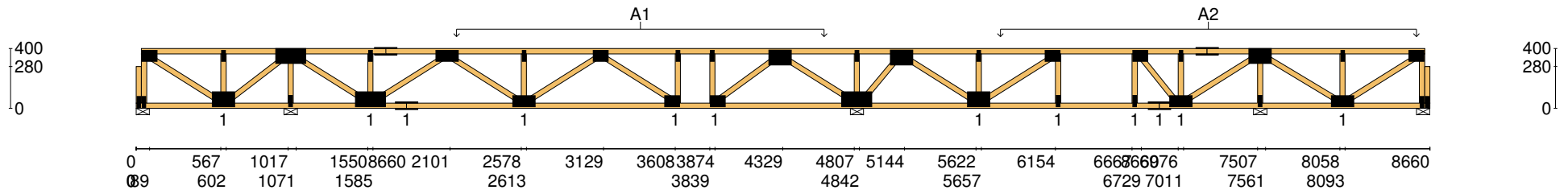
	S1	S2	S3	S4	S5
1.35DL (kN)	-0.32	1.44	1.58	1.22	0.20
1.2DL + 1.5LL (kN)	-1.11	6.04	6.18	3.96	0.67

Joint	Nail Plate	Joint	Nail Plate
BL1-1	25x75-MN	T7	25x75-MN
T1	75x100-MN	T8	75x100-MN
BL1	25x75-MN	B6	75x100-MN
B1	100x150-MN	T9	25x75-MN
T2	25x75-MN	B7	75x100-MN
T3	100x200-MN	T10	25x75-MN
B2	25x75-MN	T11	100x150-MN
B3	100x200-MN	B8	100x200-MN
T4	25x75-MN	T12	25x75-MN
T5	75x150-MN	T13	100x150-MN
B4	75x150-MN	B9	100x150-MN
T6	75x150-MN	T14	25x75-MN
B5	75x150-MN	BR1-1	25x75-MN

- 14 more nail plates were not shown -


Span: 8660	Floor Material: Particle (15.4 kg/m²)	Application: General Areas	All dimensions in millimetres. This drawing should be read in conjunction with Multinail Technical sheets. Wall plates must be placed at supports only.	016020 (TN-016-020)
Overhang: 0/0	Floor Covering: Std Carpet + Underlay (8 kg/m²)	Live Load: 1.5 kPa		Ver: Floor 1.9.4
Spacing: 600	Ceiling Material: Plaster 10mm Supa Span (8.2 kg/m²)	Point Load: 1.8 kN		Date: 12/02/2019
Quantity: 1	Ceiling Fixing: Metal direct @ 600c	Design: AS 1720.1-2010		Page: 5 of 26

Client: DEDICATED DEVELOPMENT PTY LTD	Trusstech SA Pty Ltd 16 High St., Dry Creek, SA 5094	Job No: TT02398
Site: 638 BURBRIDGE RD WEST BEACH SA 5024 AUS		Weight: 54.76 kg
Ref: DWELLING 2	Joist Name: FJ4 Type: SJ 400 Joists: FJ9	Total Weight: 54.76 kg
		Laminations: 1

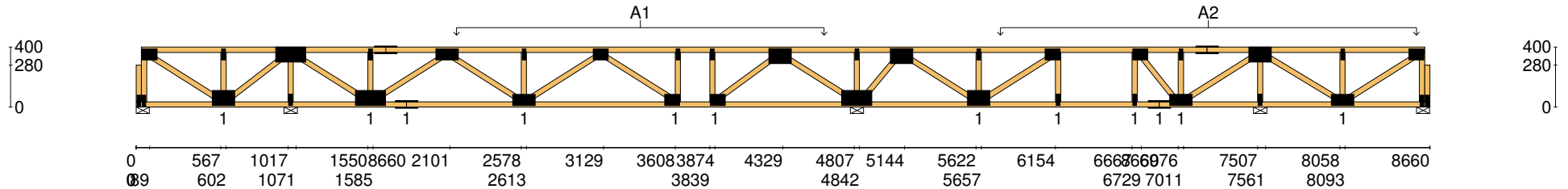


User Def. Load	A1	A2
	43.50 kg/m ²	174.19 kg/m ²
	WET AREA	WET AREA

Applied Load	
DL	(kN)
LL	(kN)
WL Up	(kN)
WL Dn	(kN)


Span:	8660	Floor Material:	Particle (15.4 kg/m ²)	Application:	General Areas	All dimensions in millimetres. This drawing should be read in conjunction with Multinail Technical sheets. Wall plates must be placed at supports only.	016020 (TN-016-020)
Overhang:	0/0	Floor Covering:	Std Carpet + Underlay (8 kg/m ²)	Live Load:	1.5 kPa		Ver: Floor 1.9.4
Spacing:	600	Ceiling Material:	Plaster 10mm Supa Span (8.2 kg/m ²)	Point Load:	1.8 kN		Date: 12/02/2019
Quantity:	1	Ceiling Fixing:	Metal direct @ 600c	Design:	AS 1720.1-2010		Page: 6 of 26

Client: DEDICATED DEVELOPMENT PTY LTD	Trusstech SA Pty Ltd 16 High St., Dry Creek, SA 5094	Job No: TT02398
Site: 638 BURBRIDGE RD WEST BEACH SA 5024 AUS		Weight: 54.76 kg
Ref: DWELLING 2	Joist Name: FJ5 Type: SJ 400 Joists: FJ10	Total Weight: 54.76 kg
		Laminations: 1

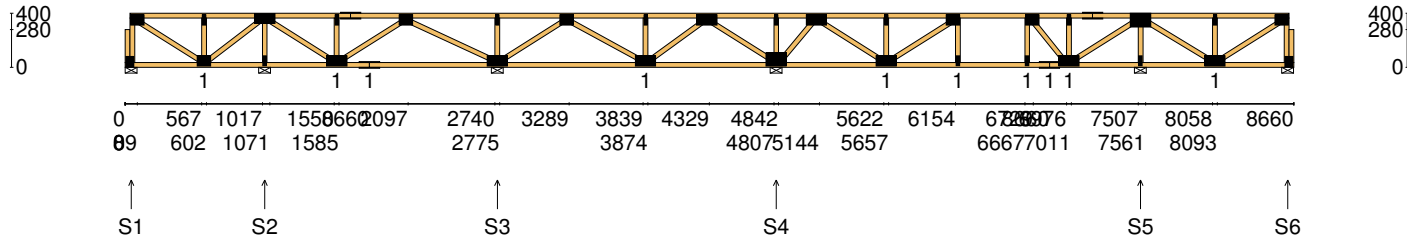


User Def. Load	A1	A2
	43.50 kg/m ²	174.19 kg/m ²
	WET AREA	WET AREA

Applied Load	
DL	(kN)
LL	(kN)
WL Up	(kN)
WL Dn	(kN)

Span:	8660	Floor Material:	Particle (15.4 kg/m²)	Application:	General Areas	All dimensions in millimetres. This drawing should be read in conjunction with Multinail Technical sheets. Wall plates must be placed at supports only.	016020 (TN-016-020)
Overhang:	0/0	Floor Covering:	Std Carpet + Underlay (8 kg/m²)	Live Load:	1.5 kPa		Ver: Floor 1.9.4
Spacing:	600	Ceiling Material:	Plaster 10mm Supa Span (8.2 kg/m²)	Point Load:	1.8 kN		Date: 12/02/2019
Quantity:	1	Ceiling Fixing:	Metal direct @ 600c	Design:	AS 1720.1-2010		Page: 8 of 26

Client: DEDICATED DEVELOPMENT PTY LTD	Trusstech SA Pty Ltd 16 High St., Dry Creek, SA 5094	Job No: TT02398
Site: 638 BURBRIDGE RD WEST BEACH SA 5024 AUS	Joist Name: FJ6 Type: SJ 400	Weight: 53.73 kg
Ref: DWELLING 2	Joists: FJ11	Total Weight: 53.73 kg
		Laminations: 1



TIMBER / PLATES

Member	Size	Plating	Restraint
BC1	90x35-MGP10 H0 ADS	JD5	600
LBlock1	90x35-MGP10 H0 ADS	JD5	
LEW1	90x35-MGP10 H0 ADS	JD5	
TC1	90x35-MGP10 H0 ADS	JD5	300
W1	90x35-MGP10 H0 ADS	JD5	
W2	90x35-MGP10 H0 ADS	JD5	
W3	90x35-MGP10 H0 ADS	JD5	
W4	90x35-MGP10 H0 ADS	JD5	
W5	90x35-MGP10 H0 ADS	JD5	
W6	90x35-MGP10 H0 ADS	JD5	
W7	90x35-MGP10 H0 ADS	JD5	
TC2	90x35-MGP10 H0 ADS	JD5	300
BC2	90x35-MGP10 H0 ADS	JD5	600


- 25 more members were not shown -

Vertical Reactions at Supports

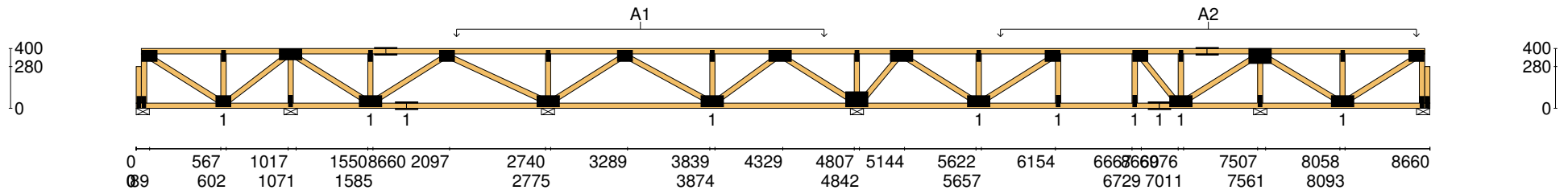
	S1	S2	S3	S4	S5	S6
1.35DL (kN)	0.12	0.49	0.77	1.31	1.21	0.23
1.2DL + 1.5LL (kN)	0.55	2.40	2.96	5.13	3.93	0.76

Joint	Nail Plate	Joint	Nail Plate
BL1-1	25x75-MN	T7	25x75-MN
T1	75x100-MN	T8	75x100-MN
BL1	25x75-MN	B6	75x150-MN
B1	75x100-MN	T9	25x75-MN
T2	25x75-MN	T10	75x150-MN
T3	75x150-MN	B7	100x150-MN
B2	25x75-MN	T11	25x75-MN
B3	75x150-MN	T12	75x150-MN
T4	25x75-MN	B8	75x150-MN
T5	75x150-MN	T13	25x75-MN
B4	75x150-MN	T14	75x100-MN
T6	75x100-MN	B9	25x75-MN
B5	75x150-MN	BR1-1	25x75-MN

- 12 more nail plates were not shown -


Span: 8660	Floor Material: Particle (15.4 kg/m²)	Application: General Areas	All dimensions in millimetres. This drawing should be read in conjunction with Multinail Technical sheets.	016020 (TN-016-020)
Overhang: 0/0	Floor Covering: Std Carpet + Underlay (8 kg/m²)	Live Load: 1.5 kPa	Wall plates must be placed at supports only.	Ver: Floor 1.9.4
Spacing: 600	Ceiling Material: Plaster 10mm Supa Span (8.2 kg/m²)	Point Load: 1.8 kN		Date: 12/02/2019
Quantity: 1	Ceiling Fixing: Metal direct @ 600c	Design: AS 1720.1-2010		Page: 9 of 26

Client: DEDICATED DEVELOPMENT PTY LTD	Trusstech SA Pty Ltd 16 High St., Dry Creek, SA 5094	Job No: TT02398
Site: 638 BURBRIDGE RD WEST BEACH SA 5024 AUS		Weight: 53.73 kg
Ref: DWELLING 2	Joist Name: FJ6 Type: SJ 400 Joists: FJ11	Total Weight: 53.73 kg
		Laminations: 1

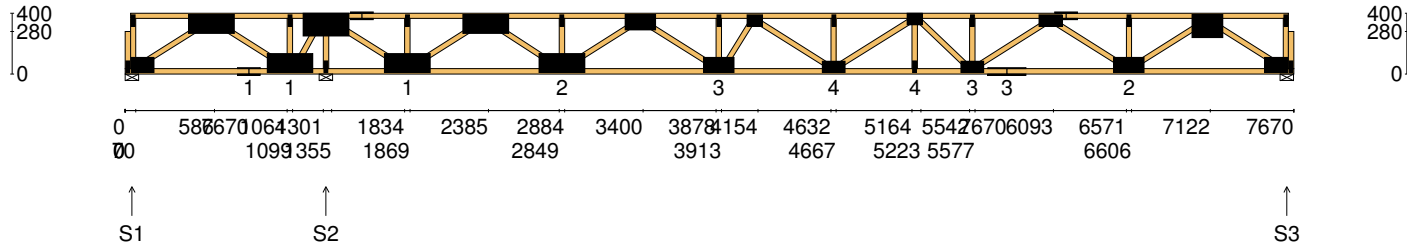


User Def. Load	A1	A2
	43.50 kg/m ²	174.19 kg/m ²
	WET AREA	WET AREA

Applied Load	
DL	(kN)
LL	(kN)
WL Up	(kN)
WL Dn	(kN)

Span:	8660	Floor Material:	Particle (15.4 kg/m ²)	Application:	General Areas	All dimensions in millimetres. This drawing should be read in conjunction with Multinail Technical sheets. Wall plates must be placed at supports only.	016020 (TN-016-020)
Overhang:	0/0	Floor Covering:	Std Carpet + Underlay (8 kg/m ²)	Live Load:	1.5 kPa		Ver: Floor 1.9.4
Spacing:	600	Ceiling Material:	Plaster 10mm Supa Span (8.2 kg/m ²)	Point Load:	1.8 kN		Date: 12/02/2019
Quantity:	1	Ceiling Fixing:	Metal direct @ 600c	Design:	AS 1720.1-2010		Page: 10 of 26

Client: DEDICATED DEVELOPMENT PTY LTD	Trusstech SA Pty Ltd 16 High St., Dry Creek, SA 5094	Job No: TT02398
Site: 638 BURBRIDGE RD WEST BEACH SA 5024 AUS		Weight: 54.70 kg
Ref: DWELLING 2	Joist Name: FJ7 Type: SJ 400 Joists: FJ12	Total Weight: 54.70 kg
		Laminations: 1



TIMBER / PLATES

Member	Size	Plating	Restraint
BC1	90x35-MGP10 H0 ADS	JD5	600
LBlock1	90x35-MGP10 H0 ADS	JD5	
LEW1	90x35-MGP10 H0 ADS	JD5	
TC1	90x35-HC H0 MAN	JD5	300
W1	90x35-MGP10 H0 ADS	JD5	
W2	90x35-MGP10 H0 ADS	JD5	
BC2	90x35-MGP10 H0 ADS	JD5	600
W3	90x35-MGP10 H0 ADS	JD5	
W4	90x35-MGP10 H0 ADS	JD5	
W5	90x35-MGP10 H0 ADS	JD5	
W6	90x35-MGP10 H0 ADS	JD5	
TC2	90x35-HC H0 MAN	JD5	300
W7	90x35-MGP10 H0 ADS	JD5	


- 22 more members were not shown -

Vertical Reactions at Supports

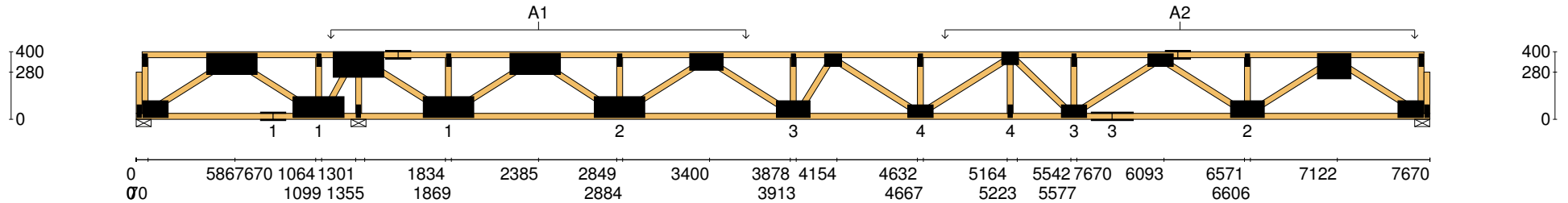
	S1	S2	S3
1.35DL (kN)	-1.26	3.55	1.51
1.2DL + 1.5LL (kN)	-4.44	13.40	5.15

Joint	Nail Plate	Joint	Nail Plate
B1-1	25x75-MN	B6	125x300-MN
B1	100x150-MN	T7	25x75-MN
TL1	25x75-MN	T8	100x200-MN
T1	125x300-MN	B7	100x200-MN
B2	75x150-MN	T9	25x75-MN
B3	125x300-MN	T10	75x100-MN
T2	25x75-MN	B8	75x150-MN
T3	150x300-MN	T11	25x75-MN
B4	25x75-MN	T12	75x100-MN
T4	75x150-MN	B9	25x75-MN
B5	125x300-MN	B10	75x150-MN
T5	25x75-MN	T13	25x75-MN
T6	125x300-MN	B13-1	25x75-MN

- 8 more nail plates were not shown -


Span: 7670	Floor Material: Particle (15.4 kg/m²)	Application: General Areas	All dimensions in millimetres. This drawing should be read in conjunction with Multinail Technical sheets. Wall plates must be placed at supports only.	016020 (TN-016-020)
Overhang: 0/0	Floor Covering: Std Carpet + Underlay (8 kg/m²)	Live Load: 1.5 kPa		Ver: Floor 1.9.4
Spacing: 600	Ceiling Material: Plaster 10mm Supa Span (8.2 kg/m²)	Point Load: 1.8 kN		Date: 12/02/2019
Quantity: 1	Ceiling Fixing: Metal direct @ 600c	Design: AS 1720.1-2010		Page: 11 of 26

Client: DEDICATED DEVELOPMENT PTY LTD	Trusstech SA Pty Ltd 16 High St., Dry Creek, SA 5094	Job No: TT02398
Site: 638 BURBRIDGE RD WEST BEACH SA 5024 AUS		Weight: 54.70 kg
Ref: DWELLING 2	Joist Name: FJ7 Type: SJ 400 Joists: FJ12	Total Weight: 54.70 kg
		Laminations: 1

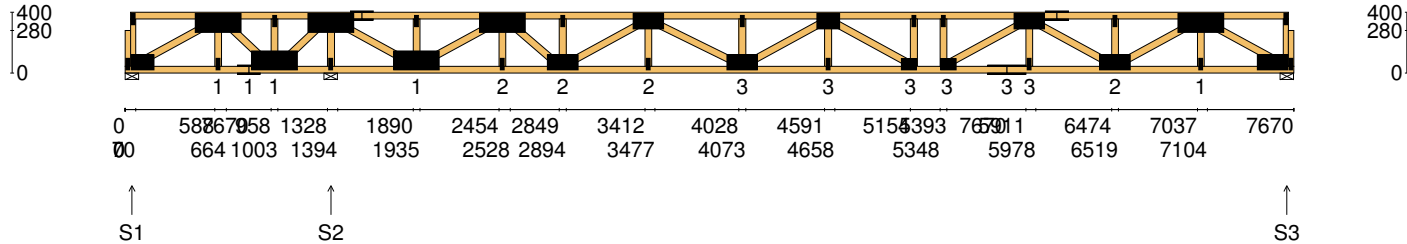


User Def. Load	A1	A2
	43.50 kg/m ²	174.19 kg/m ²
	WET AREA	WET AREA

Applied Load
DL (kN)
LL (kN)
WL Up (kN)
WL Dn (kN)

Span: 7670	Floor Material: Particle (15.4 kg/m²)	Application: General Areas	All dimensions in millimetres. This drawing should be read in conjunction with Multinail Technical sheets. Wall plates must be placed at supports only.	016020 (TN-016-020)
Overhang: 0/0	Floor Covering: Std Carpet + Underlay (8 kg/m²)	Live Load: 1.5 kPa		Ver: Floor 1.9.4
Spacing: 600	Ceiling Material: Plaster 10mm Supa Span (8.2 kg/m²)	Point Load: 1.8 kN		Date: 12/02/2019
Quantity: 1	Ceiling Fixing: Metal direct @ 600c	Design: AS 1720.1-2010		Page: 12 of 26

Client: DEDICATED DEVELOPMENT PTY LTD	Trusstech SA Pty Ltd 16 High St., Dry Creek, SA 5094	Job No: TT02398
Site: 638 BURBRIDGE RD WEST BEACH SA 5024 AUS		Weight: 64.94 kg
Ref: DWELLING 2	Joist Name: FJ8 Type: SJ 400 Joists: FJ13	Total Weight: 64.94 kg
		Laminations: 1



TIMBER / PLATES

Member	Size	Plating	Restraint
BC1	90x45-MGP10 H0 ADS	JD5	600
LBlock1	90x35-MGP10 H0 ADS	JD5	
LEW1	90x35-MGP10 H0 ADS	JD5	
TC1	90x45-MGP10 H0 ADS	JD5	300
W1	90x45-MGP10 H0 ADS	JD5	
W2	90x45-MGP10 H0 ADS	JD5	
W3	90x45-MGP10 H0 ADS	JD5	
BC2	90x45-MGP10 H0 ADS	JD5	600
W4	90x45-MGP10 H0 ADS	JD5	
W5	90x45-MGP10 H0 ADS	JD5	
W6	90x45-MGP10 H0 ADS	JD5	
W7	90x45-MGP10 H0 ADS	JD5	
TC2	90x45-MGP10 H0 ADS	JD5	300


- 25 more members were not shown -

Vertical Reactions at Supports

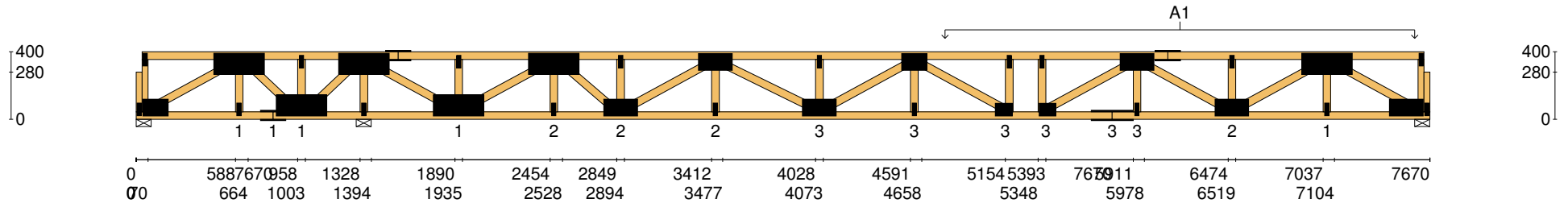
	S1	S2	S3
1.35DL (kN)	-1.10	3.18	1.53
1.2DL + 1.5LL (kN)	-4.16	12.95	5.15

Joint	Nail Plate	Joint	Nail Plate
B1-1	25x75-MN	T6	125x300-MN
B1	100x150-MN	B7	25x75-MN
TL1	25x75-MN	B8	100x200-MN
T1	125x300-MN	T7	25x75-MN
B2	25x75-MN	T8	100x200-MN
B3	75x150-MN	B9	25x75-MN
B4	125x300-MN	B10	100x200-MN
T2	25x75-MN	T9	25x75-MN
T3	125x300-MN	T10	100x150-MN
B5	25x75-MN	B11	25x75-MN
T4	75x150-MN	B12	75x100-MN
B6	125x300-MN	T11	25x75-MN
T5	25x75-MN	B18-1	25x75-MN

- 12 more nail plates were not shown -


Span: 7670	Floor Material: Particle (15.4 kg/m²)	Application: General Areas	All dimensions in millimetres. This drawing should be read in conjunction with Multinail Technical sheets. Wall plates must be placed at supports only.	016020 (TN-016-020)
Overhang: 0/0	Floor Covering: Std Carpet + Underlay (8 kg/m²)	Live Load: 1.5 kPa		Ver: Floor 1.9.4
Spacing: 600	Ceiling Material: Plaster 10mm Supa Span (8.2 kg/m²)	Point Load: 1.8 kN		Date: 12/02/2019
Quantity: 1	Ceiling Fixing: Metal direct @ 600c	Design: AS 1720.1-2010		Page: 13 of 26

Client: DEDICATED DEVELOPMENT PTY LTD	Trusstech SA Pty Ltd 16 High St., Dry Creek, SA 5094 Joist Name: FJ8 Type: SJ 400 Joists: FJ13	Job No: TT02398
Site: 638 BURBRIDGE RD WEST BEACH SA 5024 AUS		Weight: 64.94 kg
Ref: DWELLING 2		Total Weight: 64.94 kg Laminations: 1

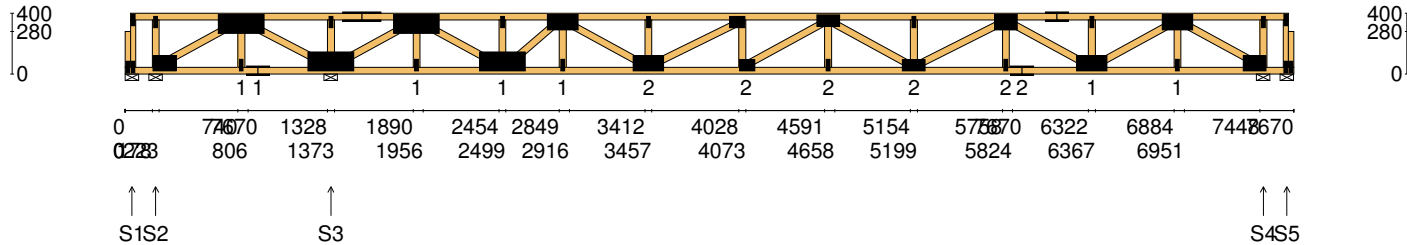


User Def. Load	A1 174.19 kg/m ² WET AREA
-----------------------	--

Applied Load	
DL (kN)	
LL (kN)	
WL Up (kN)	
WL Dn (kN)	

Span: 7670	Floor Material: Particle (15.4 kg/m²)	Application: General Areas	All dimensions in millimetres. This drawing should be read in conjunction with Multinail Technical sheets. Wall plates must be placed at supports only.	016020 (TN-016-020)
Overhang: 0/0	Floor Covering: Std Carpet + Underlay (8 kg/m²)	Live Load: 1.5 kPa		Ver: Floor 1.9.4
Spacing: 600	Ceiling Material: Plaster 10mm Supa Span (8.2 kg/m²)	Point Load: 1.8 kN		Date: 12/02/2019
Quantity: 1	Ceiling Fixing: Metal direct @ 600c	Design: AS 1720.1-2010		Page: 14 of 26

Client: DEDICATED DEVELOPMENT PTY LTD	Trusstech SA Pty Ltd 16 High St., Dry Creek, SA 5094	Job No: TT02398
Site: 638 BURBRIDGE RD WEST BEACH SA 5024 AUS		Weight: 63.26 kg
Ref: DWELLING 2	Joist Name: FJ9 Type: SJ 400 Joists: FJ14	Total Weight: 63.26 kg
		Laminations: 1



TIMBER / PLATES

Member	Size	Plating	Restraint
BC1	90x45-MGP10 H0 ADS	JD5	600
LBlock1	90x35-MGP10 H0 ADS	JD5	
LEW1	90x35-MGP10 H0 ADS	JD5	
TC1	90x45-MGP10 H0 ADS	JD5	300
W1	90x45-MGP10 H0 ADS	JD5	
W2	90x45-MGP10 H0 ADS	JD5	
W3	90x45-MGP10 H0 ADS	JD5	
W4	90x45-MGP10 H0 ADS	JD5	
BC2	90x45-MGP10 H0 ADS	JD5	600
W5	90x45-MGP10 H0 ADS	JD5	
W6	90x45-MGP10 H0 ADS	JD5	
TC2	90x45-MGP10 H0 ADS	JD5	300
W7	90x45-MGP10 H0 ADS	JD5	


- 24 more members were not shown -

Vertical Reactions at Supports

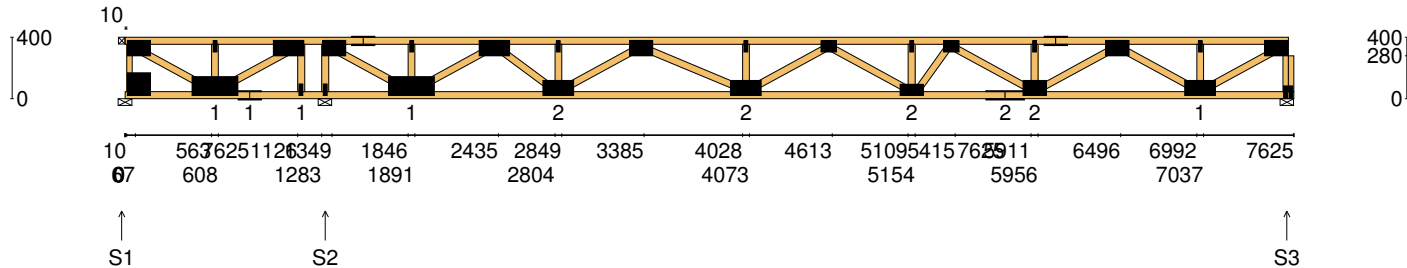
	S1	S2	S3	S4	S5
1.35DL (kN)	0.01	-0.80	2.54	1.36	-0.39
1.2DL + 1.5LL (kN)	-0.01	-3.73	11.89	6.38	-1.92

Joint	Nail Plate	Joint	Nail Plate
BL2-1	25x75-MN	B6	125x300-MN
TL1	25x75-MN	T6	25x75-MN
BL2	25x75-MN	T7	100x200-MN
B1	100x150-MN	B7	25x75-MN
T1	25x75-MN	B8	100x200-MN
T2	125x300-MN	T8	25x75-MN
B2	25x75-MN	T9	75x100-MN
B3	75x150-MN	B9	75x100-MN
B4	125x300-MN	T10	75x150-MN
T3	25x75-MN	B10	25x75-MN
T4	75x250-MN	B11	75x150-MN
T5	125x300-MN	T11	25x75-MN
B5	25x75-MN	BR2-1	25x75-MN

- 12 more nail plates were not shown -

Span: 7670	Floor Material: Particle (15.4 kg/m²)	Application: General Areas	All dimensions in millimetres. This drawing should be read in conjunction with Multinail Technical sheets. Wall plates must be placed at supports only.	016020 (TN-016-020)
Overhang: 0/0	Floor Covering: Std Carpet + Underlay (8 kg/m²)	Live Load: 1.5 kPa		Ver: Floor 1.9.4
Spacing: 600	Ceiling Material: Plaster 10mm Supa Span (8.2 kg/m²)	Point Load: 1.8 kN		Date: 12/02/2019
Quantity: 1	Ceiling Fixing: Metal direct @ 600c	Design: AS 1720.1-2010		Page: 15 of 26

Client: DEDICATED DEVELOPMENT PTY LTD	Trusstech SA Pty Ltd 16 High St., Dry Creek, SA 5094	Job No: TT02398
Site: 638 BURBRIDGE RD WEST BEACH SA 5024 AUS		Weight: 60.19 kg
Ref: DWELLING 2	Joist Name: FJ10 Type: SJ 400 Joists: FJ15	Total Weight: 60.19 kg
		Laminations: 1



TIMBER / PLATES

Member	Size	Plating	Restraint
BC1	90x45-MGP10 H0 ADS	JD5	600
TC1	90x45-MGP10 H0 ADS	JD5	300
LEW1	90x35-MGP10 H0 ADS	JD5	
W1	90x45-MGP10 H0 ADS	JD5	
W2	90x45-MGP10 H0 ADS	JD5	
W3	90x45-MGP10 H0 ADS	JD5	
BC2	90x45-MGP10 H0 ADS	JD5	600
W4	90x45-MGP10 H0 ADS	JD5	
W5	90x45-MGP10 H0 ADS	JD5	
W6	90x45-MGP10 H0 ADS	JD5	
TC2	90x45-MGP10 H0 ADS	JD5	300
W7	90x45-MGP10 H0 ADS	JD5	
W8	90x45-MGP10 H0 ADS	JD5	


- 19 more members were not shown -

Vertical Reactions at Supports

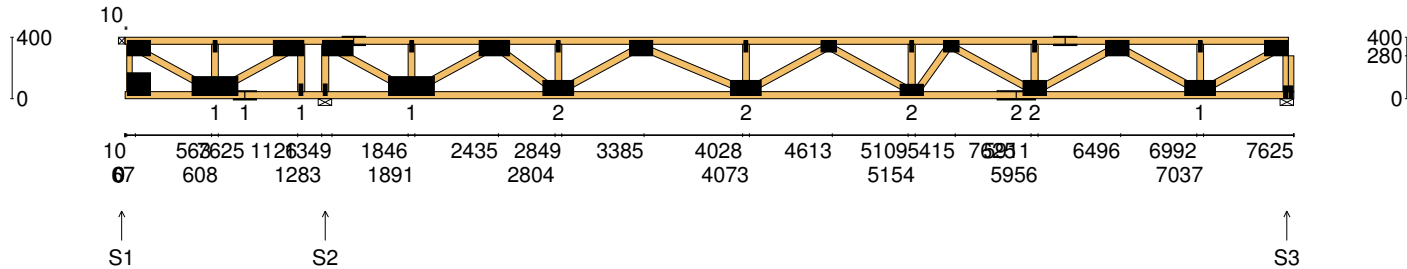
	S1	S2	S3
1.35DL (kN)	-0.63	2.36	0.93
1.2DL + 1.5LL (kN)	-3.07	11.25	4.37

Joint	Nail Plate	Joint	Nail Plate
T1	100x150-MN	B6	100x200-MN
BL1	150x150-MN	T8	25x75-MN
B1	125x300-MN	T9	100x150-MN
T2	25x75-MN	B7	100x200-MN
B2	75x150-MN	T10	25x75-MN
T3	100x200-MN	T11	75x100-MN
B3	25x75-MN	B8	75x150-MN
T4	100x150-MN	T12	25x75-MN
B4	25x75-MN	T13	75x100-MN
T5	75x150-MN	B9	75x250-MN
B5	125x300-MN	B10	100x150-MN
T6	25x75-MN	T14	25x75-MN
T7	100x200-MN	BR1-1	25x75-MN

- 6 more nail plates were not shown -

Span: 7625	Floor Material: Particle (15.4 kg/m²)	Application: General Areas	All dimensions in millimetres. This drawing should be read in conjunction with Multinail Technical sheets. Wall plates must be placed at supports only.	016020 (TN-016-020)
Overhang: 0/0	Floor Covering: Std Carpet + Underlay (8 kg/m²)	Live Load: 1.5 kPa		Ver: Floor 1.9.4
Spacing: 600	Ceiling Material: Plaster 10mm Supa Span (8.2 kg/m²)	Point Load: 1.8 kN		Date: 12/02/2019
Quantity: 1	Ceiling Fixing: Metal direct @ 600c	Design: AS 1720.1-2010		Page: 16 of 26

Client: DEDICATED DEVELOPMENT PTY LTD	Trusstech SA Pty Ltd 16 High St., Dry Creek, SA 5094	Job No: TT02398
Site: 638 BURBRIDGE RD WEST BEACH SA 5024 AUS		Weight: 60.27 kg
Ref: DWELLING 2	Joist Name: FJ11 Type: SJ 400 Joists: FJ16, FJ17, FJ18, FJ19, FJ23, FJ24	Total Weight: 361.60 kg
		Laminations: 1



TIMBER / PLATES

Member	Size	Plating	Restraint
BC1	90x45-MGP10 H0 ADS	JD5	600
TC1	90x45-MGP10 H0 ADS	JD5	300
LEW1	90x35-MGP10 H0 ADS	JD5	
W1	90x45-MGP10 H0 ADS	JD5	
W2	90x45-MGP10 H0 ADS	JD5	
W3	90x45-MGP10 H0 ADS	JD5	
BC2	90x45-MGP10 H0 ADS	JD5	600
W4	90x45-MGP10 H0 ADS	JD5	
W5	90x45-MGP10 H0 ADS	JD5	
W6	90x45-MGP10 H0 ADS	JD5	
TC2	90x45-MGP10 H0 ADS	JD5	300
W7	90x45-MGP10 H0 ADS	JD5	
W8	90x45-MGP10 H0 ADS	JD5	


- 19 more members were not shown -

Vertical Reactions at Supports

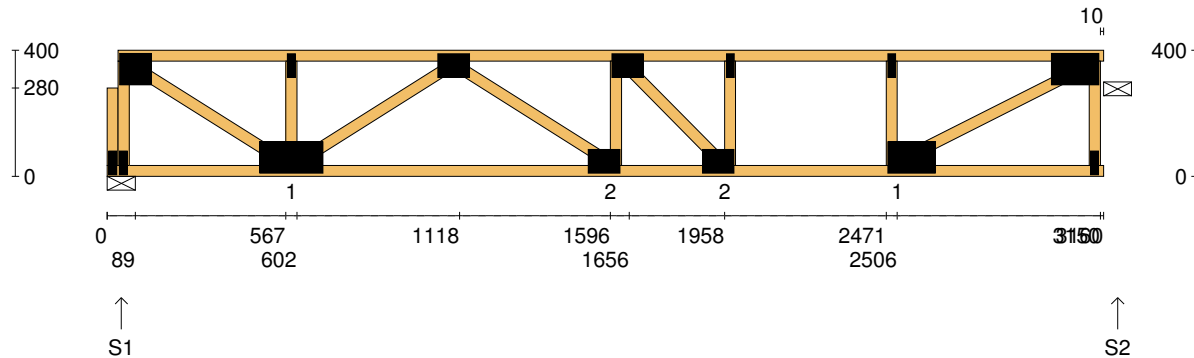
	S1	S2	S3
1.35DL (kN)	-0.63	2.35	0.93
1.2DL + 1.5LL (kN)	-3.03	11.20	4.38

Joint	Nail Plate	Joint	Nail Plate
T1	100x150-MN	B6	100x200-MN
BL1	150x150-MN	T8	25x75-MN
B1	125x300-MN	T9	100x150-MN
T2	25x75-MN	B7	100x200-MN
B2	75x150-MN	T10	25x75-MN
T3	100x200-MN	T11	75x100-MN
B3	25x75-MN	B8	75x150-MN
T4	100x200-MN	T12	25x75-MN
B4	25x75-MN	T13	75x100-MN
T5	75x150-MN	B9	75x250-MN
B5	125x300-MN	B10	100x150-MN
T6	25x75-MN	T14	25x75-MN
T7	100x200-MN	BR1-1	25x75-MN

- 6 more nail plates were not shown -

Span: 7625	Floor Material: Particle (15.4 kg/m²)	Application: General Areas	All dimensions in millimetres. This drawing should be read in conjunction with Multinail Technical sheets. Wall plates must be placed at supports only.	016020 (TN-016-020)
Overhang: 0/0	Floor Covering: Std Carpet + Underlay (8 kg/m²)	Live Load: 1.5 kPa		Ver: Floor 1.9.4
Spacing: 600	Ceiling Material: Plaster 10mm Supa Span (8.2 kg/m²)	Point Load: 1.8 kN		Date: 12/02/2019
Quantity: 6	Ceiling Fixing: Metal direct @ 600c	Design: AS 1720.1-2010		Page: 17 of 26

Client: DEDICATED DEVELOPMENT PTY LTD	Trusstech SA Pty Ltd 16 High St., Dry Creek, SA 5094	Job No: TT02398
Site: 638 BURBRIDGE RD WEST BEACH SA 5024 AUS		Weight: 20.59 kg
Ref: DWELLING 2	Joist Name: FJ12 Type: SJ 400 Joists: FJ20	Total Weight: 20.59 kg
		Laminations: 1



TIMBER / PLATES


Member	Size	Plating	Restraint
BC1	90x35-HC H0 MAN	JD5	600
LBlock1	90x35-MGP10 H0 ADS	JD5	
LEW1	90x35-MGP10 H0 ADS	JD5	
TC1	90x35-MGP10 H0 ADS	JD5	300
W1	90x35-MGP10 H0 ADS	JD5	
W2	90x35-MGP10 H0 ADS	JD5	
W3	90x35-MGP10 H0 ADS	JD5	
W4	90x35-MGP10 H0 ADS	JD5	
W5	90x35-MGP10 H0 ADS	JD5	
W6	90x35-MGP10 H0 ADS	JD5	
W7	90x35-MGP10 H0 ADS	JD5	
W8	90x35-MGP10 H0 ADS	JD5	
W9	90x35-MGP10 H0 ADS	JD5	

- 1 more member was not shown -

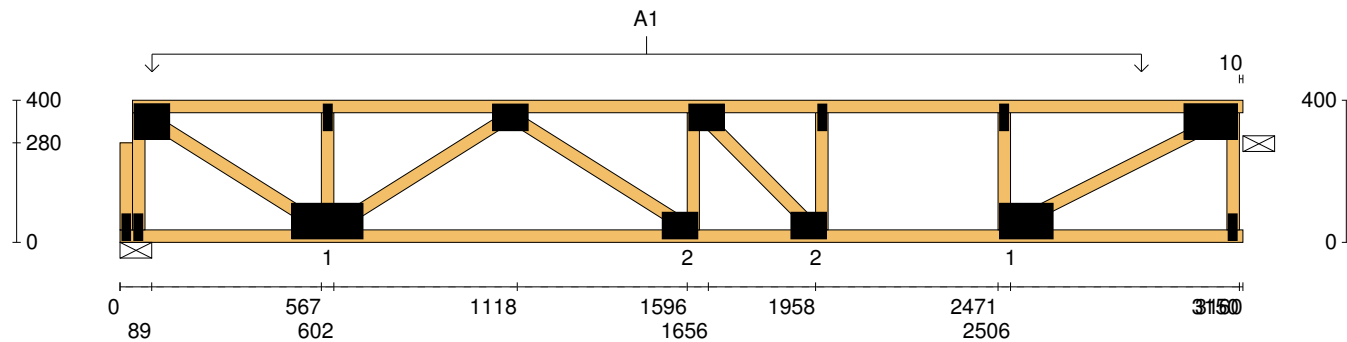
Vertical Reactions at Supports


	S1	S2
1.35DL (kN)	0.99	0.92
1.2DL + 1.5LL (kN)	3.24	3.14

Joint	Nail Plate	Joint	Nail Plate
BL1-1	25x75-MN	T7	100x150-MN
T1	100x100-MN		
BL1	25x75-MN		
B1	100x200-MN		
T2	25x75-MN		
T3	75x100-MN		
B2	75x100-MN		
T4	75x100-MN		
B3	75x100-MN		
T5	25x75-MN		
B4	100x150-MN		
T6	25x75-MN		
BR1	25x75-MN		

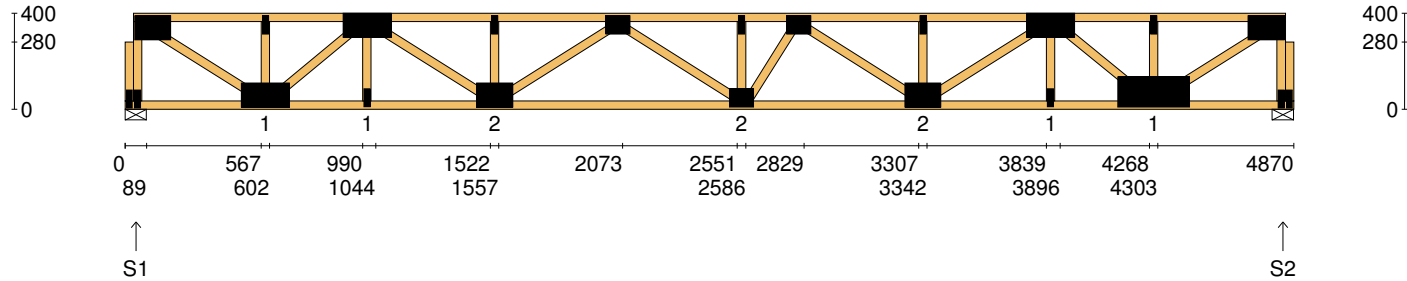
Span: 3160	Floor Material: Particle (15.4 kg/m²)	Application: General Areas	All dimensions in millimetres. This drawing should be read in conjunction with Multinail Technical sheets. Wall plates must be placed at supports only.	016020 (TN-016-020)
Overhang: 0/0	Floor Covering: Std Carpet + Underlay (8 kg/m²)	Live Load: 1.5 kPa		Ver: Floor 1.9.4
Spacing: 600	Ceiling Material: Plaster 10mm Supa Span (8.2 kg/m²)	Point Load: 1.8 kN		Date: 12/02/2019
Quantity: 1	Ceiling Fixing: Metal direct @ 600c	Design: AS 1720.1-2010		Page: 18 of 26

Client: DEDICATED DEVELOPMENT PTY LTD	Trusstech SA Pty Ltd 16 High St., Dry Creek, SA 5094	Job No: TT02398
Site: 638 BURBRIDGE RD WEST BEACH SA 5024 AUS		Weight: 20.59 kg
Ref: DWELLING 2	Joist Name: FJ12 Type: SJ 400 Joists: FJ20	Total Weight: 20.59 kg
		Laminations: 1



User Def. Load		A1 174.19 kg/m ² WET AREA	
Applied Load			
DL	(kN)		
LL	(kN)		
WL Up	(kN)		
WL Dn	(kN)		
Span:	3160	Floor Material:	Particle (15.4 kg/m ²)
Overhang:	0/0	Floor Covering:	Std Carpet + Underlay (8 kg/m ²)
Spacing:	600	Ceiling Material:	Plaster 10mm Supa Span (8.2 kg/m ²)
Quantity:	1	Ceiling Fixing:	Metal direct @ 600c
		Application:	General Areas
		Live Load:	1.5 kPa
		Point Load:	1.8 kN
		Design:	AS 1720.1-2010
All dimensions in millimetres. This drawing should be read in conjunction with Multinail Technical sheets. Wall plates must be placed at supports only.			
			
		016020 (TN-016-020)	
		Ver:	Floor 1.9.4
		Date:	12/02/2019
		Page:	19 of 26

Client: DEDICATED DEVELOPMENT PTY LTD	Trusstech SA Pty Ltd 16 High St., Dry Creek, SA 5094	Job No: TT02398
Site: 638 BURBRIDGE RD WEST BEACH SA 5024 AUS		Weight: 32.50 kg
Ref: DWELLING 2	Joist Name: FJ13 Type: SJ 400 Joists: FJ21	Total Weight: 32.50 kg
		Laminations: 1



TIMBER / PLATES


Member	Size	Plating	Restraint
BC1	90x35-MGP10 H0 ADS	JD5	600
LBlock1	90x35-MGP10 H0 ADS	JD5	
LEW1	90x35-MGP10 H0 ADS	JD5	
TC1	90x35-MGP10 H0 ADS	JD5	300
W1	90x35-MGP10 H0 ADS	JD5	
W2	90x35-MGP10 H0 ADS	JD5	
W3	90x35-MGP10 H0 ADS	JD5	
W4	90x35-MGP10 H0 ADS	JD5	
W5	90x35-MGP10 H0 ADS	JD5	
W6	90x35-MGP10 H0 ADS	JD5	
W7	90x35-MGP10 H0 ADS	JD5	
W8	90x35-MGP10 H0 ADS	JD5	
W9	90x35-MGP10 H0 ADS	JD5	

- 10 more members were not shown -

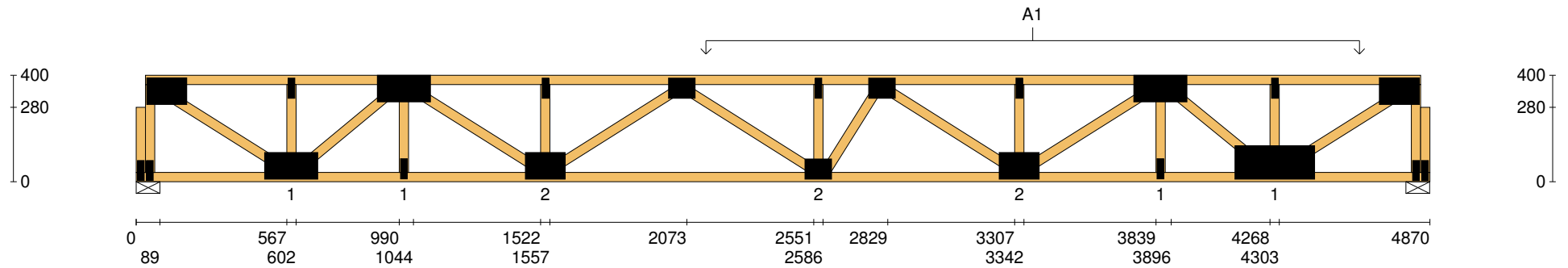
Vertical Reactions at Supports

	S1	S2
1.35DL (kN)	0.92	1.08
1.2DL + 1.5LL (kN)	4.04	4.17

Joint	Nail Plate	Joint	Nail Plate
BL1-1	25x75-MN	B5	100x150-MN
T1	100x150-MN	T8	25x75-MN
BL1	25x75-MN	T9	100x200-MN
B1	100x200-MN	B6	25x75-MN
T2	25x75-MN	B7	125x300-MN
T3	100x200-MN	T10	25x75-MN
B2	25x75-MN	BR1	25x75-MN
B3	100x150-MN	T11	100x150-MN
T4	25x75-MN	BR1-1	25x75-MN
T5	75x100-MN		
B4	75x100-MN		
T6	25x75-MN		
T7	75x100-MN		


Span: 4870	Floor Material: Particle (15.4 kg/m²)	Application: General Areas	All dimensions in millimetres. This drawing should be read in conjunction with Multinail Technical sheets. Wall plates must be placed at supports only.	016020 (TN-016-020)
Overhang: 0/0	Floor Covering: Std Carpet + Underlay (8 kg/m²)	Live Load: 1.5 kPa		Ver: Floor 1.9.4
Spacing: 600	Ceiling Material: Plaster 10mm Supa Span (8.2 kg/m²)	Point Load: 1.8 kN		Date: 12/02/2019
Quantity: 1	Ceiling Fixing: Metal direct @ 600c	Design: AS 1720.1-2010		Page: 20 of 26

Client: DEDICATED DEVELOPMENT PTY LTD	Trusstech SA Pty Ltd 16 High St., Dry Creek, SA 5094 Joist Name: FJ13 Type: SJ 400 Joists: FJ21	Job No: TT02398
Site: 638 BURBRIDGE RD WEST BEACH SA 5024 AUS		Weight: 32.50 kg
Ref: DWELLING 2		Total Weight: 32.50 kg Laminations: 1

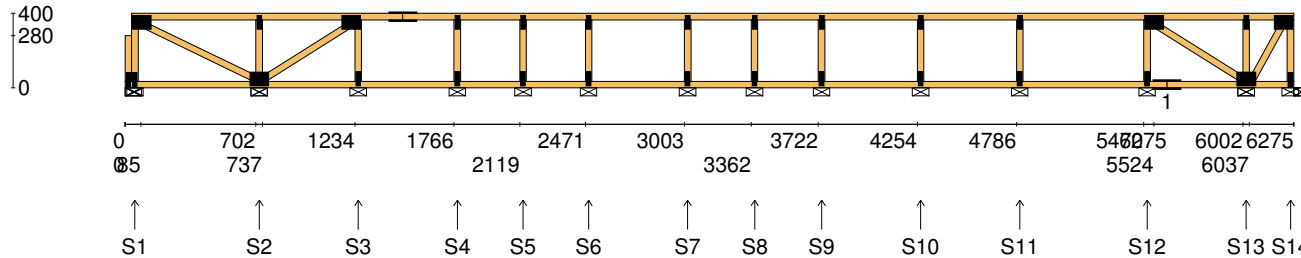


User Def. Load	A1 43.50 kg/m ² WET AREA
-----------------------	---

Applied Load	
DL (kN)	
LL (kN)	
WL Up (kN)	
WL Dn (kN)	

Span: 4870	Floor Material: Particle (15.4 kg/m²)	Application: General Areas	All dimensions in millimetres. This drawing should be read in conjunction with Multinail Technical sheets. Wall plates must be placed at supports only.	016020 (TN-016-020)
Overhang: 0/0	Floor Covering: Std Carpet + Underlay (8 kg/m²)	Live Load: 1.5 kPa		Ver: Floor 1.9.4
Spacing: 600	Ceiling Material: Plaster 10mm Supa Span (8.2 kg/m²)	Point Load: 1.8 kN		Date: 12/02/2019
Quantity: 1	Ceiling Fixing: Metal direct @ 600c	Design: AS 1720.1-2010		Page: 21 of 26

Client: DEDICATED DEVELOPMENT PTY LTD	Trusstech SA Pty Ltd 16 High St., Dry Creek, SA 5094	Job No: TT02398
Site: 638 BURBRIDGE RD WEST BEACH SA 5024 AUS		Weight: 32.82 kg
Ref: DWELLING 2	Joist Name: FJ14 Type: SJ 400 Ladder Joists: FJ25	Total Weight: 32.82 kg
		Laminations: 1



TIMBER / PLATES

Member	Size	Plating	Restraint
BC1	90x35-MGP10 H0 ADS	JD5	600
LBlock1	90x35-MGP10 H0 ADS	JD5	
LEW1	90x35-MGP10 H0 ADS	JD5	
TC1	90x35-MGP10 H0 ADS	JD5	300
W1	90x35-MGP10 H0 ADS	JD5	
W2	90x35-MGP10 H0 ADS	JD5	
W3	90x35-MGP10 H0 ADS	JD5	
W4	90x35-MGP10 H0 ADS	JD5	
TC2	90x35-MGP10 H0 ADS	JD5	300
W5	90x35-MGP10 H0 ADS	JD5	
W6	90x35-MGP10 H0 ADS	JD5	
W7	90x35-MGP10 H0 ADS	JD5	
W8	90x35-MGP10 H0 ADS	JD5	


- 10 more members were not shown -

Vertical Reactions at Supports

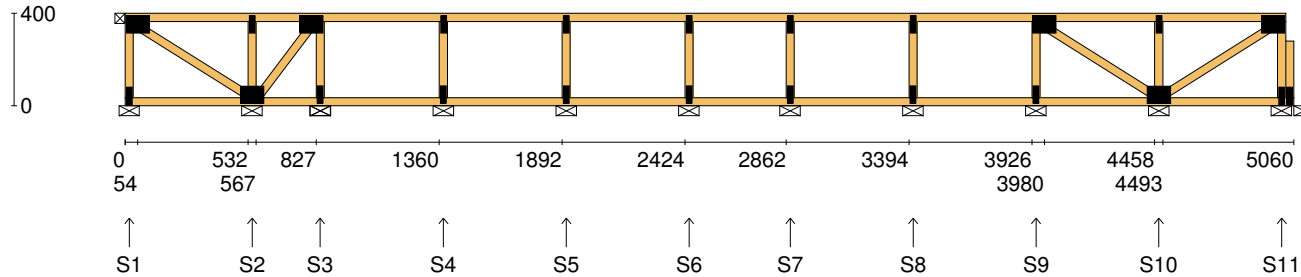
	S1	S2	S3	S4	S5	S6	S7	S8	S9	S10	S11	S12	S13	S14
1.35DL (kN)	0.09	0.24	0.16	0.16	0.07	0.15	0.15	0.09	0.15	0.16	0.19	0.19	0.17	0.01
1.2DL + 1.5LL (kN)	0.42	1.20	0.79	0.86	0.34	0.81	0.78	0.47	0.78	0.84	1.02	1.00	0.83	0.01

Joint	Nail Plate	Joint	Nail Plate
BL1-1	25x75-MN	B5	25x75-MN
T1	75x100-MN	T8	25x75-MN
BL1	25x75-MN	B6	25x75-MN
B1	75x100-MN	T9	25x75-MN
T2	25x75-MN	B7	25x75-MN
T3	75x100-MN	T10	25x75-MN
B2	25x75-MN	B8	25x75-MN
T4	75x150-MN	T11	25x75-MN
T5	25x75-MN	B9	25x75-MN
B3	25x75-MN	T12	25x75-MN
T6	25x75-MN	B10	25x75-MN
B4	25x75-MN	T13	75x100-MN
T7	25x75-MN	T15	75x100-MN

- 5 more nail plates were not shown -

Span: 6275	Floor Material: Particle (15.4 kg/m²)	Application: General Areas	All dimensions in millimetres. This drawing should be read in conjunction with Multinail Technical sheets. Wall plates must be placed at supports only.	016020 (TN-016-020)
Overhang: 0/0	Floor Covering: Std Carpet + Underlay (8 kg/m²)	Live Load: 1.5 kPa		Ver: Floor 1.9.4
Spacing: 600	Ceiling Material: Plaster 10mm Supa Span (8.2 kg/m²)	Point Load: 1.8 kN		Date: 12/02/2019
Quantity: 1	Ceiling Fixing: Metal direct @ 600c	Design: AS 1720.1-2010		Page: 22 of 26

Client: DEDICATED DEVELOPMENT PTY LTD	Trusstech SA Pty Ltd 16 High St., Dry Creek, SA 5094	Job No: TT02398
Site: 638 BURBRIDGE RD WEST BEACH SA 5024 AUS		Weight: 26.68 kg
Ref: DWELLING 2	Joist Name: FJ15 Type: SJ 400 Ladder Joists: FJ26	Total Weight: 26.68 kg
		Laminations: 1



TIMBER / PLATES


Member	Size	Plating	Restraint
BC1	90x35-MGP10 H0 ADS	JD5	600
LEW1	90x35-MGP10 H0 ADS	JD5	
TC1	90x35-MGP10 H0 ADS	JD5	300
W1	90x35-MGP10 H0 ADS	JD5	
W2	90x35-MGP10 H0 ADS	JD5	
W3	90x35-MGP10 H0 ADS	JD5	
W4	90x35-MGP10 H0 ADS	JD5	
W5	90x35-MGP10 H0 ADS	JD5	
W6	90x35-MGP10 H0 ADS	JD5	
W7	90x35-MGP10 H0 ADS	JD5	
W8	90x35-MGP10 H0 ADS	JD5	
W9	90x35-MGP10 H0 ADS	JD5	
W10	90x35-MGP10 H0 ADS	JD5	

- 5 more members were not shown -

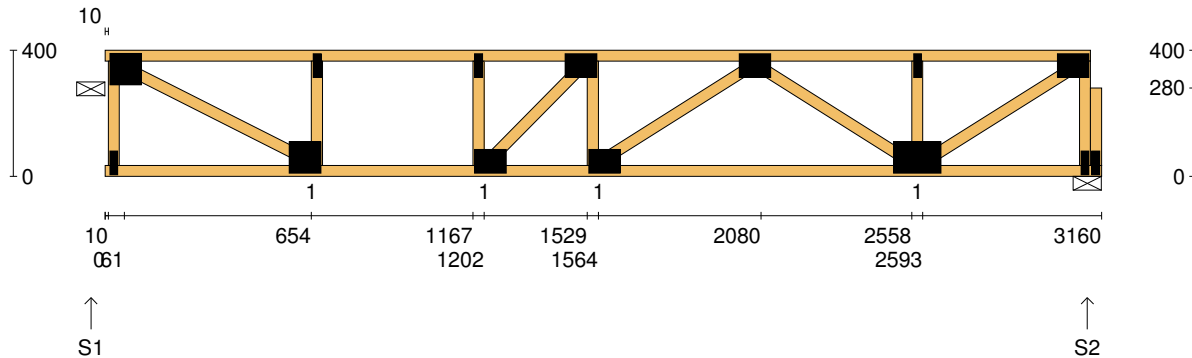
Vertical Reactions at Supports

	S1	S2	S3	S4	S5	S6	S7	S8	S9	S10	S11
1.35DL (kN)	0.07	0.19	0.10	0.17	0.17	0.15	0.15	0.17	0.15	0.22	0.07
1.2DL + 1.5LL (kN)	0.31	0.99	0.46	0.90	0.87	0.78	0.77	0.89	0.77	1.11	0.30

Joint	Nail Plate	Joint	Nail Plate
T1	75x100-MN	B6	25x75-MN
BL1	25x75-MN	T8	25x75-MN
B1	75x100-MN	B7	25x75-MN
T2	25x75-MN	T9	75x100-MN
T3	75x100-MN	B8	25x75-MN
B2	25x75-MN	B9	75x100-MN
T4	25x75-MN	T10	25x75-MN
B3	25x75-MN	BR1	25x75-MN
T5	25x75-MN	T11	75x100-MN
B4	25x75-MN	BR1-1	25x75-MN
T6	25x75-MN		
B5	25x75-MN		
T7	25x75-MN		

Span: 5060	Floor Material: Particle (15.4 kg/m²)	Application: General Areas	All dimensions in millimetres. This drawing should be read in conjunction with Multinail Technical sheets. Wall plates must be placed at supports only.	016020 (TN-016-020)
Overhang: 0/0	Floor Covering: Std Carpet + Underlay (8 kg/m²)	Live Load: 1.5 kPa		Ver: Floor 1.9.4
Spacing: 600	Ceiling Material: Plaster 10mm Supa Span (8.2 kg/m²)	Point Load: 1.8 kN		Date: 12/02/2019
Quantity: 1	Ceiling Fixing: Metal direct @ 600c	Design: AS 1720.1-2010		Page: 23 of 26

Client: DEDICATED DEVELOPMENT PTY LTD	Trusstech SA Pty Ltd 16 High St., Dry Creek, SA 5094	Job No: TT02398
Site: 638 BURBRIDGE RD WEST BEACH SA 5024 AUS	Joist Name: FJ16 Type: SJ 400	Weight: 19.31 kg
Ref: DWELLING 2	Joists: FJ27, FJ28, FJ29, FJ30, FJ31	Total Weight: 96.56 kg
		Laminations: 1



TIMBER / PLATES


Member	Size	Plating	Restraint
BC1	90x35-MGP10 H0 ADS	JD5	600
TC1	90x35-MGP10 H0 ADS	JD5	300
LEW1	90x35-MGP10 H0 ADS	JD5	
W1	90x35-MGP10 H0 ADS	JD5	
W2	90x35-MGP10 H0 ADS	JD5	
W3	90x35-MGP10 H0 ADS	JD5	
W4	90x35-MGP10 H0 ADS	JD5	
W5	90x35-MGP10 H0 ADS	JD5	
W6	90x35-MGP10 H0 ADS	JD5	
W7	90x35-MGP10 H0 ADS	JD5	
W8	90x35-MGP10 H0 ADS	JD5	
W9	90x35-MGP10 H0 ADS	JD5	
REW1	90x35-MGP10 H0 ADS	JD5	

- 1 more member was not shown -

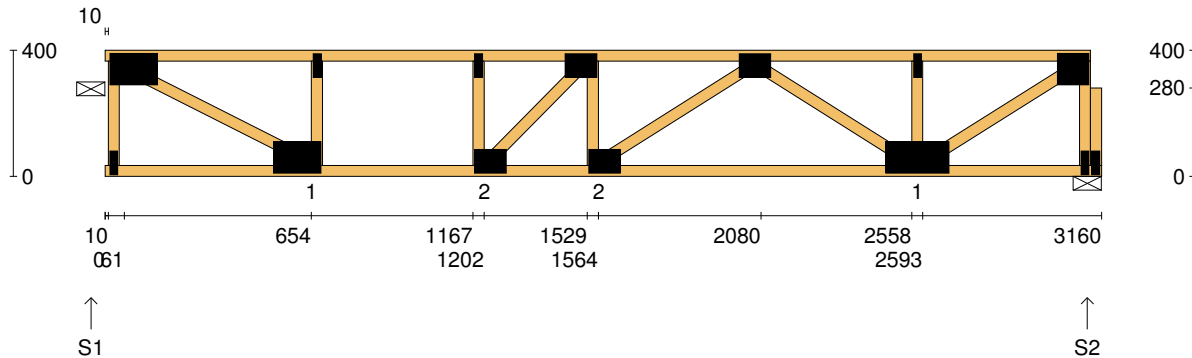
Vertical Reactions at Supports

	S1	S2
1.35DL (kN)	0.51	0.52
1.2DL + 1.5LL (kN)	2.53	2.54

Joint	Nail Plate	Joint	Nail Plate
T1	100x100-MN	BR1-1	25x75-MN
BL1	25x75-MN		
B1	100x100-MN		
T2	25x75-MN		
B2	75x100-MN		
T3	25x75-MN		
T4	75x100-MN		
B3	75x100-MN		
T5	75x100-MN		
B4	100x150-MN		
T6	25x75-MN		
BR1	25x75-MN		
T7	75x100-MN		

Span: 3160	Floor Material: Particle (15.4 kg/m²)	Application: General Areas	All dimensions in millimetres. This drawing should be read in conjunction with Multinail Technical sheets.	016020 (TN-016-020)
Overhang: 0/0	Floor Covering: Std Carpet + Underlay (8 kg/m²)	Live Load: 1.5 kPa	Wall plates must be placed at supports only.	Ver: Floor 1.9.4
Spacing: 600	Ceiling Material: Plaster 10mm Supa Span (8.2 kg/m²)	Point Load: 1.8 kN		Date: 12/02/2019
Quantity: 5	Ceiling Fixing: Metal direct @ 600c	Design: AS 1720.1-2010		Page: 24 of 26

Client: DEDICATED DEVELOPMENT PTY LTD	Trusstech SA Pty Ltd 16 High St., Dry Creek, SA 5094	Job No: TT02398
Site: 638 BURBRIDGE RD WEST BEACH SA 5024 AUS	Joist Name: FJ17 Type: SJ 400	Weight: 20.59 kg
Ref: DWELLING 2	Joists: FJ32, FJ33	Total Weight: 41.18 kg
		Laminations: 1



TIMBER / PLATES


Member	Size	Plating	Restraint
BC1	90x35-HC H0 MAN	JD5	600
TC1	90x35-MGP10 H0 ADS	JD5	300
LEW1	90x35-MGP10 H0 ADS	JD5	
W1	90x35-MGP10 H0 ADS	JD5	
W2	90x35-MGP10 H0 ADS	JD5	
W3	90x35-MGP10 H0 ADS	JD5	
W4	90x35-MGP10 H0 ADS	JD5	
W5	90x35-MGP10 H0 ADS	JD5	
W6	90x35-MGP10 H0 ADS	JD5	
W7	90x35-MGP10 H0 ADS	JD5	
W8	90x35-MGP10 H0 ADS	JD5	
W9	90x35-MGP10 H0 ADS	JD5	
REW1	90x35-MGP10 H0 ADS	JD5	

- 1 more member was not shown -

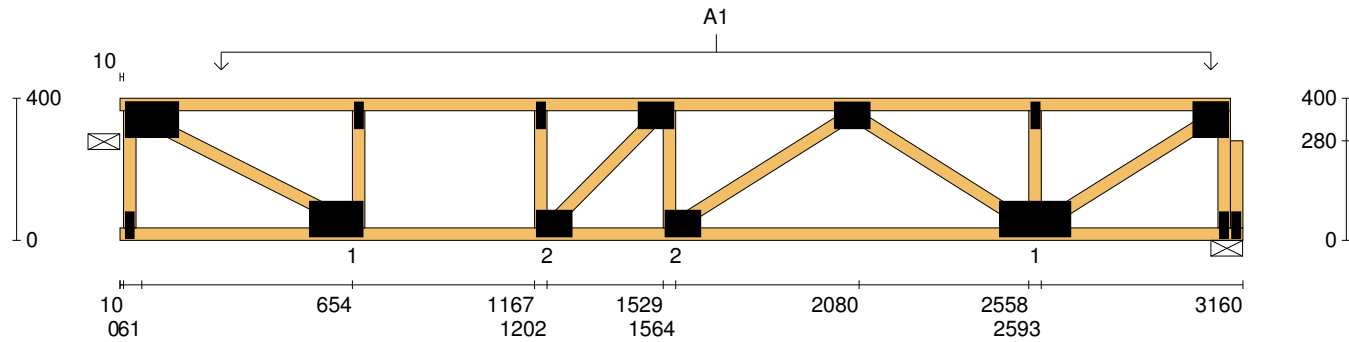
Vertical Reactions at Supports

	S1	S2
1.35DL (kN)	0.92	0.99
1.2DL + 1.5LL (kN)	3.14	3.24

Joint	Nail Plate	Joint	Nail Plate
T1	100x150-MN	BR1-1	25x75-MN
BL1	25x75-MN		
B1	100x150-MN		
T2	25x75-MN		
B2	75x100-MN		
T3	25x75-MN		
T4	75x100-MN		
B3	75x100-MN		
T5	75x100-MN		
B4	100x200-MN		
T6	25x75-MN		
BR1	25x75-MN		
T7	100x100-MN		

Span: 3160	Floor Material: Particle (15.4 kg/m²)	Application: General Areas	All dimensions in millimetres. This drawing should be read in conjunction with Multinail Technical sheets. Wall plates must be placed at supports only.	016020 (TN-016-020)
Overhang: 0/0	Floor Covering: Std Carpet + Underlay (8 kg/m²)	Live Load: 1.5 kPa		Ver: Floor 1.9.4
Spacing: 600	Ceiling Material: Plaster 10mm Supa Span (8.2 kg/m²)	Point Load: 1.8 kN		Date: 12/02/2019
Quantity: 2	Ceiling Fixing: Metal direct @ 600c	Design: AS 1720.1-2010		Page: 25 of 26

Client: DEDICATED DEVELOPMENT PTY LTD	Trusstech SA Pty Ltd 16 High St., Dry Creek, SA 5094	Job No: TT02398
Site: 638 BURBRIDGE RD WEST BEACH SA 5024 AUS		Weight: 20.59 kg
Ref: DWELLING 2	Joist Name: FJ17 Type: SJ 400 Joists: FJ32, FJ33	Total Weight: 41.18 kg
		Laminations: 1



User Def. Load		A1 174.19 kg/m² WET AREA						
Applied Load								
DL (kN)								
LL (kN)								
WL Up (kN)								
WL Dn (kN)								
Span:	3160	Floor Material:	Particle (15.4 kg/m²)	Application:	General Areas	All dimensions in millimetres. This drawing should be read in conjunction with Multinail Technical sheets. Wall plates must be placed at supports only.	016020 (TN-016-020)	
Overhang:	0/0	Floor Covering:	Std Carpet + Underlay (8 kg/m²)	Live Load:	1.5 kPa		Ver:	Floor 1.9.4
Spacing:	600	Ceiling Material:	Plaster 10mm Supa Span (8.2 kg/m²)	Point Load:	1.8 kN		Date:	12/02/2019
Quantity:	2	Ceiling Fixing:	Metal direct @ 600c	Design:	AS 1720.1-2010		Page:	26 of 26